

# ▶ Webnet2000 DataCentre

**Webnet2000 Limited have been enabling organisations develop their Internet presence for over 10 Years.**

The Webnet2000 Datacentre features the very latest world class resilient infrastructure, including multiple levels of 24/7 security, in-house support and environmental controls to name but a few.

Webnet2000 offer an extensive range of dedicated and managed dedicated hosting services ideal for businesses with high-traffic web sites, databases, multiple web site hosting and other applications where a powerful stand-alone platform is required.

Colocating your hosting equipment with Webnet2000 is the ideal solution for business wishing to retain complete control over their hosting equipment, software and operating systems.

## ▶ DEDICATED

- Performance
- Security
- Custom Configuration

## ▶ COLOCATION

- Increased Flexibility
- Your Equipment
- Reliable Power

## WEBNET2000



## OUR SERVICES



**Colocation**

**Dedicated Servers**

**Virtual Servers**

**Backup Services**

**Disaster Recovery**



**Webnet2000 Limited**

Tel : 0871 71 71 239  
Int : +44 (0)116 285 2444  
Fax : 0116 254 4901  
email : sales@webnet2000.net

1-2 Victoria Mews  
De Montfort Place  
Leicester  
LE1 7GZ

COLOCATION

**With today's reliance on computers you need to ensure that your systems are housed in the most suitable facilities. Colocation with Webnet2000 give you peace of mind that your systems are secure and operational**

**What is colocation?**

Colocation facilities offer space within a managed environment, providing security, resilience and communication lines. Colocation facilities can be neutral or carrier owned.

Customers housing equipment at Webnet2000 enjoy all the advantages of power resilience, temperature control, systems monitoring and security systems, but at a very much reduced cost to setting up and monitoring a facility themselves.

**Colocation Defined**

A colocation facility, sometimes referred to as a datacentre, is a network-connected secure commercial facility for the housing of telecommunications and IT infrastructure. Colocation involves the sub-letting of space in a safe and secure environment for a carrier or Internet Service Providers (ISPs) switching equipment either in a facility owned by an independent company or a network owning carrier. Increasingly it refers to the location of a server or Web server owned by a Web hosting company, an application provider (ASP), an ISP or an enterprise user in a facilities management centre.



**Webnet2000 Limited**

# ▶ Colocated Hosting Services

▶ COLOCATION

- Increased Flexibility
- Your Equipment
- Reliable Power

▶

KEY BENEFITS

**A resilient operational environment, providing the ideal place to house business critical equipment**

Diverse telecoms routing

Ease of interconnection

Secure site access and control

Disaster Recovery

Operational 24/7/365

Skilled engineers providing technical support

Flexible space provisioning from a single U, to a complete rack fitted to the clients specific requirements

24/7/365 monitoring of all equipment

Tel : 0871 71 71 239  
Int : +44 (0)116 285 2444  
Fax : 0116 254 4901  
email : sales@webnet2000.net

1-2 Victoria Mews  
De Montfort Place  
Leicester  
LE1 7GZ

## DEDICATED HOSTING



**A Dedicated server refers to the rental and exclusive use of a computer that includes a web server, related software, and connection to the Internet, housed in a datacentre**

A dedicated server is usually needed for a website (or set of related company sites) that may develop a considerable amount of traffic. The server is still owned and housed by Webnet2000 in a state of art, fully secure data centre.

Dedicated servers can be configured and operated remotely by the end user, giving you exclusive use and command over your website's server increased download times and data storage, unlike shared hosting.

Dedicated server hosting is specially made for users with mission critical or complex requirements, since it allows you to run complicated applications such as databases, e-mail applications and streaming media.

You can manage every aspect of your Webnet2000 dedicated server with a permanent keyboard, video and mouse control from any web browser, anywhere in the world.

Perform simple updates, full BIOS access tasks and hardware re-boots. With remote control access, you're never locked out of your server.

Cost effective and load balancing can be provided with dedicated hosting, therefore increasing the performance of your servers.



**Webnet2000 Limited**

## ① Dedicated Hosting Services

### DEDICATED



Performance  
Security  
Custom Configuration

### ADVANTAGES OF DEDICATED HOSTING



Greater uptime  
Increased security  
Greater server access  
Exclusive bandwidth  
Greater scalability  
Ability to use custom applications  
Secure hosting facility  
24/7/365 monitoring of all equipment

Tel : 0871 71 71 239  
Int : +44 (0)116 285 2444  
Fax : 0116 254 4901  
email : sales@webnet2000.net

1-2 Victoria Mews  
De Montfort Place  
Leicester  
LE1 7GZ

## DISASTER RECOVERY



Increasingly companies are storing information in electronic format rather than on paper, whether it is on PC hard drives, servers or in e-mail boxes or archives. Whilst this generally results in increased efficiency through cost, space and time savings, it also leaves organisations exposed should they lose this data.

Data can be lost through:

- DISASTER
- ACCIDENTAL DELETION
- WILFUL DELETION
- HARDWARE FAILURE

A number of potential solutions exist for backing up data. These include:

- FLOPPY DISK
- CD/DVD
- USB MEMORY STICK
- TAPE DRIVE

Whilst the backup routines can be automated, it still requires human intervention to insert discs or tapes, and what's more research undertaken by British Telecom indicates that:

- 40% OF DATA IS NOT PROPERLY BACKED UP EACH NIGHT
- 50% OF EMPLOYEES BACKING UP DATA DO NOT CONFIGURE THE SOFTWARE CORRECTLY
- OVER 75% OF TAPE RESTORES FAIL FIRST TIME

Webnet2000 has come up with the perfect solution for business continuity planning, our disaster recovery package



**Webnet2000 Limited**

## ▶ Disaster Recovery

### ▶ THE BENEFITS TO YOU

- Reduced costs & improved efficiency
- Professional installation
- Peace of mind
- Deleted files can be recovered onsite
- Easy data restoration
- 3rd party monitoring
- Cost management

### ▶ FEATURES OF DISASTER RECOVERY

- Onsite data storage device installed and configured by a Webnet2000 engineer
- No software installation required on your PC
- Automatic instantaneous backups of data, including Outlook
- Hourly encrypted off site backups to our secure data centre
- Doesn't tie up broadband line for initial population or data restoration
- Registered and compliant with requirements for the Data Protection Act
- Service is proactively monitored to ensure backups are being carried out correctly
- Ease of data recovery in the event of a disaster

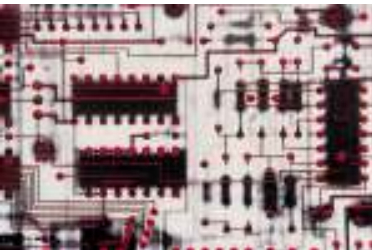
Tel : 0871 71 71 239  
Int : +44 (0)116 285 2444  
Fax : 0116 254 4901  
email : sales@webnet2000.net

1-2 Victoria Mews  
De Montfort Place  
Leicester  
LE1 7GZ

**DISASTER RECOVERY**



**BACKUP SERVICES**



## ▶ Pricing

### Colocated Hosting Services

RACK SPACE REQUIRED	SETUP COST	RECURRING COST	CONNECTION CIRCUIT
22u	£500.00	£425.00pcm	2 Mb
42u	£1000.00	£595.00pcm	2 Mb
1u	£250.00	£142.00pcm	2 Mb

### Dedicated Hosting Services

RACK SPACE REQUIRED	SETUP COST	RECURRING COST	CONNECTION CIRCUIT
Price upon quotation			

### Backup Services

DATA BACKUP (PER SERVER)	SETUP COST	RECURRING COST	DATE/TIME OF BACKUP
Weekly backup to 5GB	£150.00	£50.00pcm	Fridays Weekly
Weekly backup to 10GB	£150.00	£85.00pcm	Fridays Weekly
Weekly backup (each additional 5GB)		£30.00pcm	Fridays Weekly
Daily backup to 5GB	£150.00	£85.00pcm	Between 0900 & 1100
Daily backup to 10GB	£150.00	£150.00pcm	Between 0900 & 1100
Daily backup (each additional 5GB)		£40.00pcm	Between 0900 & 1100
Backup on demand 5GB (1hr notice required)		£85.00 per instance	1 hr after confirmation
Backup on demand 10GB (1hr notice required)		£150.00 per instance	1 hr after confirmation
Backup on demand 5GB (each additional 5GB)		£75.00 per instance	1 hr after confirmation

### Disaster Recovery

PRODUCT INFORMATION	SETUP COST	RECURRING COST	CONNECTION CIRCUIT
Onsite equipment		Price upon quotation	
Data backup & restore		Price upon quotation	

If you would like Webnet2000 to arrange a quotation for any of the above services, please do not hesitate to contact us on the details below



**Webnet2000 Limited**

Tel : 0871 71 71 239  
 Int : +44 (0)116 285 2444  
 Fax : 0116 254 4901  
 email : sales@webnet2000.net

1-2 Victoria Mews  
 De Montfort Place  
 Leicester  
 LE1 7GZ